

Table 6 (cont.)

Cat. No.	Models	Rated voltage (V)	Rated current (A)	Dimensions/size (mm)							Weight (g)		
				Fig.	A	B	C	$\phi$ D	E	F		$\phi$ d	
0659	RS98A	500	600	6.1	165	114	56	64	50	8	10.5	18	635
0660	RS98B	500/660	600	6.1	170	130	80	70	50	6	10.5	18	1280
0661	RS98C	500/660	500	6.1	181	133	86	51	40	10	10.5	15	720
0662	RS98D	500/660	600	6.1	180	131	85	64	50	10	14.2	18	970
0663	RS98E	700	250-400	6.1	130	90	50	51	38	6.3	14.2	28	450
0664	RS98F	700	300-400	6.1	181	130	72	64	50	10	14.2	28	780
0665	RS98G	700	400-600	6.1	175	135	73	63	51	10	12.5	18	1135
0666	RS98H	700	400-500	6.1	166	118	70	50	38	6	16.2	22	583
0667	RS98K	700	500-600	6.1	181	114	50	64	51	9.5	14.2	45	996
0668	RS98L	700	500-800	6.1	167	137	72	70	50	8	10.5	18	1100
0669	RS98M	700	500-600	6.1	160	108	53	63	50	9	14.2	23	925
0670	RS98N	700	500-600	6.1	180	125	73	60	46	13	14.2	25	1050
0671	RS98P	500	400-500	6.1	110	80	53	50	40	6	10.5	18	410
0672	RS99A	500/660	500-600	6.1	190	140	90	65	50	10	14.2	18	1058
0673	RS99B	500/660	400-600	6.1	203	152	95	64	50	10	10.5	18	1410
0674	RS99C	500/660	400-600	6.1	217	157	101	60	50	12	16.2	28	1420
0675	RS99D	500	800-1000	6.1	180	127	85	76	61	11.3	16.2	22	1786
0676	RS99E	700	800-1250	6.1	200	150	100	90	70	13	20.5	30	1920
0677	RS99F	700	400-600	6.1	180	129	72	64	51	9.5	13.5	18	1200
0678	RS99G	700	800-1000	6.1	195	150	95	75	61	10	13	18	1830
0679	RS99H	500	500-600	6.1	145	103	46	52	38	8	15	29	560
0680	RS99J	500	400-600	6.1	175	123	70	65	50	10	14.2	30	962
0681	RS99K	500	400-600	6.1	181	133	72	64	51	10	13	33	1023
0682	RS99L	500	400-600	6.1	175	125	71	65	50	10	14.2	33	1010

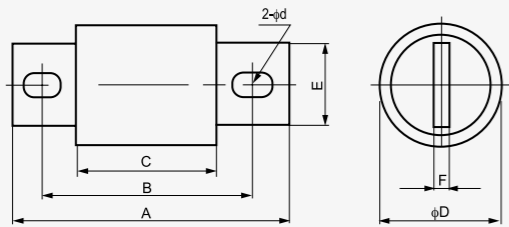


Figure 6.1

Table 6 (cont.)

Cat. No.	Models	Rated voltage (V)	Rated current (A)	Dimensions/size (mm)		Weight (g)
				Fig.	See Figure 6.2	
0683	RS94B	500	40-100	See Figure 6.2		55

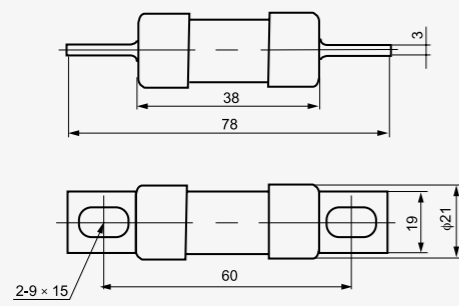


Figure 6.2

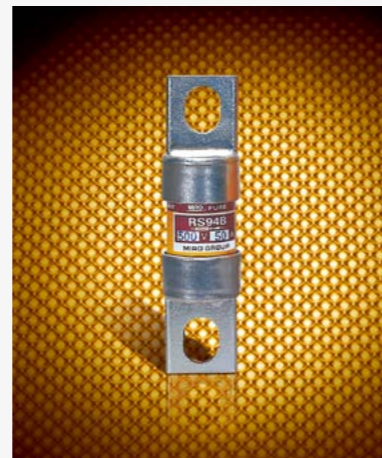


Table 6 (cont.)

Cat. No.	Models	Rated voltage (V)	Rated current (A)	Dimensions/size (mm)		Weight (g)
				Fig.	See Figure 6.3	
0684	RS99AP	700	1000	See Figure 6.3		2100

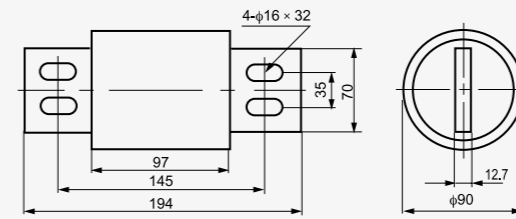


Figure 6.3



Table 6 (cont.)

Cat. No.	Models	Rated voltage (V)	Rated current (A)	Dimensions/size (mm)		Weight (g)
				Fig.	See Figure 6.4	
0685	RS99LK	1000	1000	See Figure 6.4		996

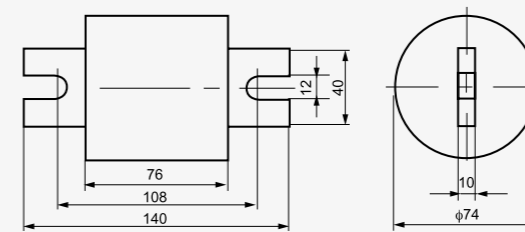


Figure 6.4

